



**Legacy** SR 340

**CHOOSE YOUR LEGACY**



A BERKSHIRE HATHAWAY COMPANY

# *Legacy* 360RB



360RB MAUI BREEZE LATTE DECOR - EXOTIC CHERRY WOOD GRAIN



## *Comfort and Convenience.*

WITH THE LEGACY FROM FOREST RIVER YOU GET THE BEST OF BOTH WORLDS, COMFORT AND STYLE. THE COCKPIT IS NOT ONLY DESIGNED WITH DRIVING IN MIND IT'S ALSO DESIGNED TO BE COMFORTABLE AND EASY TO ADJUST. THE LIVING AREA IS OPEN AND INVITING AND GREAT FOR ENTERTAINING FRIENDS AND FAMILY, YOUR GUESTS WILL BE AMAZED AT THE COMFORT AND STYLE OF YOUR LEGACY.



## *Beautiful, Inside and Out.*

ATTENTION TO DETAIL HAS NEVER LOOKED SO GOOD. THE OUTSIDE OF THE LEGACY LOOKS MORE LIKE AN EXPENSIVE PIECE OF ART THAN A MOTORHOME WITH ITS FOUR COLOR FULL BODY PAINT AND CLEAR COAT FINISH. ON THE INSIDE THE ART CONTINUES WITH PROFESSIONALLY DESIGNED INTERIORS THAT FEATURE HANDMADE CABINETRY AND A "SOFT TOUCH" PADDED CEILING. LIFE REALLY DOES IMITATE ART WITH THE LEGACY.

# *Legacy* 360RB



360RB MAUI BREEZE CREAM DECOR - EXOTIC CHERRY WOOD GRAIN

# *Legacy* 360RB



360RB MAUI BREEZE LATTE DECOR - EXOTIC CHERRY WOOD GRAIN



## *Residential Throughout.*

ENJOY THE WARM AND RICH RESIDENTIAL LOOK AND CONVENIENT FEATURES FOUND THROUGHOUT THE LEGACY. THE BATHROOM OF THE 360RB (PICTURED ABOVE) INCLUDES LARGE HIS AND HER SINKS, A PORCELAIN FOOT FLUSH TOILET AND ELECTRIC MACERATOR TOILET (REQUIRES ONLY ONE DUMP STATION). THE KITCHEN (OPPOSITE PAGE) BOASTS A 30" OTR CONVECTION MICROWAVE, STAINLESS STEEL SINK, SEALED 3 BURNER COOK TOP AND IS LUXURIOUSLY FINISHED WITH HANDCRAFTED HARDWOOD CABINETY.



## *Above and Beyond.*

YOU'VE WORKED HARD AND EARNED THE LUXURY YOU DESERVE. THE LEGACY DELIVERS EVERYTHING YOU COULD WANT IN A CLASS A MOTORHOME, INCLUDING SLEEPING AREAS SO SPACIOUS AND COMFORTABLE YOU MIGHT WANT TO TURN IN EARLY. THE BEDROOM FEATURES PLENTY OF STORAGE, SO FEEL FREE TO BRING ANYTHING YOU MIGHT NEED FOR EVEN THE LONGEST JOURNEY.

# *Legacy* 360RB



360RB KONA COFFEE CREAM DECOR - EXOTIC CHERRY WOOD GRAIN

# Legacy 340BH



340BH MAUI BREEZE CREAM DECOR - EXOTIC CHERRY WOOD GRAIN



## *Contemporary Elegance.*

LEGACY INTERIORS DELIVER STUNNING BEAUTY COUPLED WITH CONTEMPORARY DESIGN. NO DETAIL IS OVERLOOKED AS WE STRIVE TO BRING YOU THE BEST RV EXPERIENCE POSSIBLE. THE ELEGANTLY FINISHED LIVING AREA (OPPOSITE PAGE) IS DESIGNED TO MAXIMIZE SPACE AND COMFORT. THE BEDROOM (PICTURED ABOVE) IS OUTFITTED WITH ABUNDANT STORAGE AND METICULOUSLY SELECTED FABRICS THAT BLEND EFFORTLESSLY TO BE STYLISH AND SOPHISTICATED.



*Details, details, details.*

THE LEGACY SERIES OFFERS THE ULTIMATE IN ON THE ROAD CONVENIENCE, WHILE OUR 340BH MODEL (PICTURED LEFT) OFFERS A GREAT PLACE FOR GUESTS AND FAMILY TO REST IN COMPLETE COMFORT, THE 340KP MODEL (PICTURED RIGHT) UTILIZES THE SAME SPACE FOR THE ULTIMATE IN STORAGE AND FUNCTIONALITY WITH A LARGE CLOSET AND WARDROBE WITH SPACE FOR AN OPTIONAL WASHER AND DRYER.

# *Legacy* 340BH



340BH MAUI BREEZE CREAM DECOR - EXOTIC CHERRY WOOD GRAIN



## Exterior Features

- 1 STANDARD EXTERIOR ENTERTAINMENT CENTER BUILT INTO THE SIDEWALL 2 EASILY ACCESSIBLE ELECTRICAL FUSES WITH LEGACY'S NO FUSS SCHEMATIC 3 STANDARD SIDE HINGE COMPARTMENT DOORS WITH PASS-THRU STORAGE 4 WHOLE COACH WATER FILTER, DOCKING STATION AND EXTERIOR SHOWER 5 CONVENIENT GENERATOR ACCESS

# Exterior Paint Options



MERLOT RIDGE



IVORY BEACH



# Standards and Options

LEGACY FLOORPLAN	340BH	340KP	360RB	LEGACY FLOORPLAN	340BH	340KP	360RB	LEGACY FLOORPLAN	340BH	340KP	360RB
<b>AUTOMOTIVE &amp; COCKPIT</b>											
• FREIGHTLINER XCS CHASSIS	S	S	S	• AUTOMOTIVE FOAM AND SEAL, ZIEBART UNDERCOATING	S	S	S	• TECHMA MACERATOR TOILET-REAR BATH (REQUIRES ONLY ONE DUMP STATION)	N/A	N/A	S
• CUMMINS ISB 340 HP DIESEL ENGINE	S	S	S	• ELECTRIC PATIO AWNING W/ INTEGRATED LED LIGHTING	S	S	S	• WHOLE HOUSE WATER FILTER	S	S	S
• ALLISON MH-2500 TRANSMISSION	S	S	S	• FULL PASS THRU STORAGE WITH SIDE HINGE COMPARTMENT DOORS	S	S	S	• EXTERIOR HOT AND COLD SHOWER	S	S	S
• 22.5" STEEL WHEELS	S	S	S	• BUNK BED INCLUDES TWO (2) FLIP DOWN MONITORS W/ DVD AND A/V INPUT	S	N/A	N/A	• HOLDING TANK HEAT PADS	S	S	S
• TRAILER HITCH, 10,000 LBS	S	S	S	• FIBERGLASS ROOF	S	S	S	<b>DRIVER/PASSENGER AREA STANDARDS</b>			
• TRAILER HITCH CAPACITY, 5,000 LBS	S	S	S	• SLIDING STORAGE TRAY	S	S	S	• ONE PIECE WINDSHIELD	S	S	S
• ELECTRIC PUSH BUTTON SHIFTER	S	S	S	• LAYERED VACUUM BONDED ROOF	S	S	S	• POWER FRONT NIGHT SHADE	S	S	S
• 90 GALLON, DUAL FILL FUEL TANK	S	S	S	• VACUUM BONDED FLOOR W/ TUBULAR STEEL FRAME	S	S	S	• MANUAL PASSENGER & DRIVER WINDOW NIGHT SHADES	S	S	S
• 13 GALLON DEF TANK	S	S	S	• VACUUM BONDED SIDEWALLS	S	S	S	• FOG LIGHTS	S	S	S
• LCD ENGINE MESSAGE CENTER	S	S	S	• GEL-COATED FIBERGLASS SKIN	S	S	S	• DASH RADIO W/ INTEGRATED COLOR BACK-UP AND SIDE CAMERA PACKAGE W/ NAVIGATION GPS	S	S	S
• DAY TIME RUNNING LIGHTS	S	S	S	• 1/2" STRUCTURE WOOD FLOORING	S	S	S	• WRAP AROUND COCKPIT W/ INSTRUMENT CLUSTER	S	S	S
• 7-PIN TOW POWER CONNECTOR	S	S	S	• BLOCK FOAM POLYSTYRENE INSULATION	S	S	S	• 6-WAY POWER DRIVER SEAT	S	S	S
• 18.7 CFM AIR COMPRESSOR	S	S	S	• CHANNELED DRAINS FOR A/C'S	S	S	S	• LEATHERITE DRIVER/PASSENGER SEATS WITH SWIVEL AND RECLINE FEATURE	S	S	S
• FARR ECO-AIR CLEANER	S	S	S	• STEEL BASEMENT CONSTRUCTION	S	S	S	• (2)-COCKPIT TABLE/I-PAD/CONSOLE STATIONS	S	S	S
• AIR FILTER RESTRICTION INDICATOR	S	S	S	• TUBULAR STEEL FRONT BULKHEAD	S	S	S	• LIGHTED STEP WELL	S	S	S
• FUEL/WATER SEPARATOR	S	S	S	• SHOWER SKYLIGHT	S	S	S	• TWO (2) DEFROSTER FANS W/ HIGH AND LOW SETTINGS	S	S	S
• HEATED AIR DRYER	S	S	S	• REAR LADDER	S	S	S	• DRIVER/PASSENGER CUP HOLDERS	S	S	S
• AUTOMATIC, HEATED MOISTURE EJECTORS	S	S	S	• 82" INTERIOR CEILING HEIGHT	S	S	S	• AUTOMOTIVE DASH AC/HEATER W/ DELUXE CONTROLS	S	S	S
• POWER STEERING	S	S	S	• DUAL LOCKING FUEL FILL	S	S	S				
• WASHER/WIPER W/ INTERMITTENT FUNCTION	S	S	S	<b>ELECTRICAL STANDARDS</b>				<b>ENTERTAINMENT</b>			
• 160 AMP ALTERNATOR	S	S	S	• 50A SERVICE W/AUTO TRANSFER SWITCH & POWER CORD	S	S	S	• 32" LED TV, LIVING ROOM	S	S	S
• TWO (2) 1900 CCA AT 0 DEGREE FAHRENHEIT, MAINT. FREE BATTERIES	S	S	S	• 6.0KW ONAN DIESEL GENERATOR	S	S	S	• 28" LED TV, BEDROOM	S	S	S
• FRONT AIR ABS BRAKES W/ AUTO SLACK ADJUSTER	S	S	S	• ELECTRONIC BATTERY DISCONNECT SWITCH	S	S	S	• SOUND BAR W/RADIO & INTEGRATED SUBWOOFER & BLUETOOTH	S	S	S
• VARIABLE EXHAUST BRAKE	S	S	S	• REMOTE GENERATOR START SWITCH (ON DASH)	S	S	S	• SATELLITE TV PREP	S	S	S
• TELESCOPIC/TILT STEERING WHEEL	S	S	S	• LED LIGHTING PACKAGE	S	S	S	• CABLE TV PREP	S	S	S
• NEWAY AIR SUSPENSION FRONT AND REAR	S	S	S	• DRIVER/PASSENGER MAP LIGHTS	S	S	S	• HD ANTENNA WITH SIGNAL STRENGTH INDICATOR	S	S	S
• HEAVY DUTY SACHS SHOCK ABSORBERS	S	S	S	• (1) WALL SCONCE	N/A	N/A	S	• A/V DISTRIBUTION FOR ENTERTAINMENT	S	S	S
• 55 DEGREE WHEEL CUT	S	S	S	• DASH, AUXILIARY START SWITCH	S	S	S	• TWO (2) DASH STEREO SPEAKERS	S	S	S
• I-BEAM SUSPENSION W/ BELL CRANK	S	S	S	• BEDROOM READING LIGHTS	S	S	S	• SIRIUS SATELLITE RADIO CAPABILITY	S	S	S
• AIR SUSPENSION DEFLATION SYSTEM	S	S	S	• FOUR (4) SIX VOLT HOUSE BATTERIES	S	S	S	• DVD PLAYER	S	S	S
• CROSS FLOW, REAR MOUNTED RADIATOR	S	S	S	• TWO (2) MASTER ELECTRIC SHUT OFF SWITCHES	S	S	S				
• TRANSMISSION OIL COOLER	S	S	S	• POWER ENTRANCE STEP	S	S	S	<b>INTERIOR</b>			
• 5 YEAR / 100,000 MILE COOLANT (SOME MAINTENANCE REQUIRED)	S	S	S	• PATIO LIGHT	S	S	S	• VINYL TILE THROUGHOUT	S	S	S
• 4-SPOKE VIP BLACK STEERING WHEEL	S	S	S	• 2000 WATT INVERTER	S	S	S	• CARPETED LIVING ROOM AND DINING SLIDE-OUTS	S	S	S
• ELECTRONIC CRUISE CONTROL	S	S	S	• AUTO GENERATOR START	S	S	S	• MATTRESS QUEEN 60" X 80" (PILLOW TOP)	S	S	S
• W/ HIGH IDLE	S	S	S					• HIDE-A-BED SOFA	N/A	N/A	S
• 120V BLOCK HEATER (750W)	S	S	S	<b>PLUMBING STANDARDS</b>				• JACK KNIFE SOFA	S	S	N/A
				• VARIABLE SPEED CONSTANT PRESSURE WATER PUMP	S	S	S	• SOLID SURFACE KIT. & DIN. CTOPS W/ FLUSH MOUNT SINK AND STOVE COVER	S	S	S
<b>CONSTRUCTION &amp; EXTERIOR</b>				• KIT/STAINLESS STEEL SINK-UNDERMOUNT	S	S	S	• FULL EXTENSION METAL DRAWER GUIDES W/ BALL BEARINGS THROUGHOUT, SOFT CLOSE IN KITCHEN	S	S	S
• FIBERGLASS FRONT AND REAR CAPS	S	S	S	• BLACK WATER TANK FLUSH SYSTEM	S	S	S	• DEDICATED LOCATION FOR STORAGE OF STOVE TOP AND SINK COVERS	S	S	S
• FULL BODY PAINTED EXTERIOR (CLEAR COAT) 4-COLOR	S	S	S	• SINGLE LEVER FAUCET W/ PULL-OUT SPRAYER	S	S	S				
• FRONT MASK PROTECTIVE FILM	S	S	S	• DOUBLE LEVER LAVATORY FAUCETS	S	S	S				
• EXTERIOR SIDEWALL: 32" TV	S	S	S	• ABS SHOWER W/ GLASS DOOR	S	S	S				
• ENTRY ASSIST GRAB HANDLES	S	S	S	• PORCELAIN CHINA TOILET	S	S	S				
• FOUR (4) POINT FULLY AUTOMATIC HYDRAULIC LEVELING SYSTEM	S	S	S								
• HEATED EXT. MIRRORS WITH INTEGRATED CAMERAS	S	S	S								
• FRAMELESS DUAL PANE, DARK TINTED WINDOWS	S	S	S								

# Decor Options

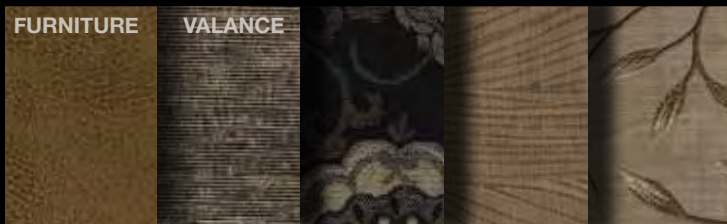
LEGACY FLOORPLAN	340BH	340KP	360RB
<b>KITCHEN PANTRY</b>	N/A	S	S
<b>DREAM BOOTH DINETTE W/ STORAGE UNDERNEATH</b>	S	S	S
<b>DUCTED A/C SYSTEM</b>	S	S	S
<b>"SOFT TOUCH" PADDED CEILING</b>	S	S	S
<b>ROLLER STYLE SUN AND BLACKOUT SHADES</b>	S	S	S
<b>BEDSIDE WARDROBE</b>	S	S	N/A
<b>DRESSER DRAWERS AND WARDROBE CABINETS</b>	S	S	S
<b>OVERHEAD CABINETS IN BEDROOM</b>	S	S	S
<b>QUEEN BED W/ BEDSPREAD AND DECORATIVE PILLOWS</b>	S	S	S
<b>BEDROOM NIGHT STANDS</b>	S	S	S
<b>MIRRORED MEDICINE CABINETS</b>	S	S	S
<b>APPLIANCES</b>			
<b>42,000 BTU FURNACE</b>	N/A	N/A	S
<b>CONTINUOUS GAS WATER HEATER</b>	S	S	S
<b>35,000 BTU FURNACE</b>	S	S	N/A
<b>30" OTR CONVECTION MICROWAVE OVEN</b>	S	S	S
<b>RESIDENTIAL REFRIGERATOR</b>	S	S	S
<b>SEALED 3-BURNER COOK TOP</b>	S	S	S
<b>FAN IN BATHROOM</b>	S	S	S
<b>FAN IN GALLEY W/THERMOSTAT CONTROL</b>	S	S	S
<b>WASHER/DRYER PREP</b>	N/A	S	S
<b>LOW PROFILE 15,000 A/C W/ HEAT PUMP FRONT</b>	S	S	S
<b>LOW PROFILE 15,000 A/C REAR</b>	S	S	S
<b>DRIVER/PASSENGER AREA OPTIONS</b>			
<b>ELECTRIC EASY-BED O/H COCKPIT AREA</b>	O	O	O
<b>APPLIANCE OPTIONS</b>			
<b>9 CU. FT. GAS/ELECTRIC REFER</b>	O	O	O
<b>STACKABLE WASHER/DRYER</b>	N/A	O	O
<b>DECOR OPTIONS</b>			
<b>BROOKSIDE COGNAC STYLE OPTIONAL COLORS</b>	O	O	O
<b>EXOTIC CHERRY STYLE OPTIONAL COLORS</b>	O	O	O
<b>SAFETY STANDARDS</b>			
<b>110 GFI PROTECTED CIRCUITS</b>	S	S	S
<b>CARBON MONOXIDE DETECTOR</b>	S	S	S
<b>LP GAS DETECTOR</b>	S	S	S
<b>SMOKE ALARM</b>	S	S	S
<b>EGRESS WINDOW'S</b>	S	S	S
<b>SURFACE MOUNTED FIRE EXTINGUISHER</b>	S	S	S



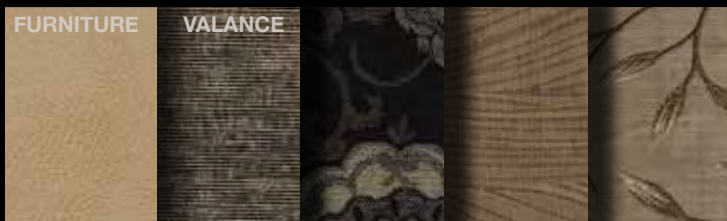
**MAUI BREEZE LATTE**



**MAUI BREEZE CREAM**



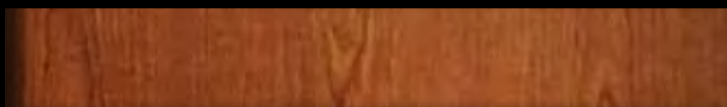
**KONA COFFEE LATTE**



**KONA COFFEE CREAM**



**BROOKSIDE COGNAC WOODGRAIN**



**EXOTIC CHERRY WOODGRAIN**

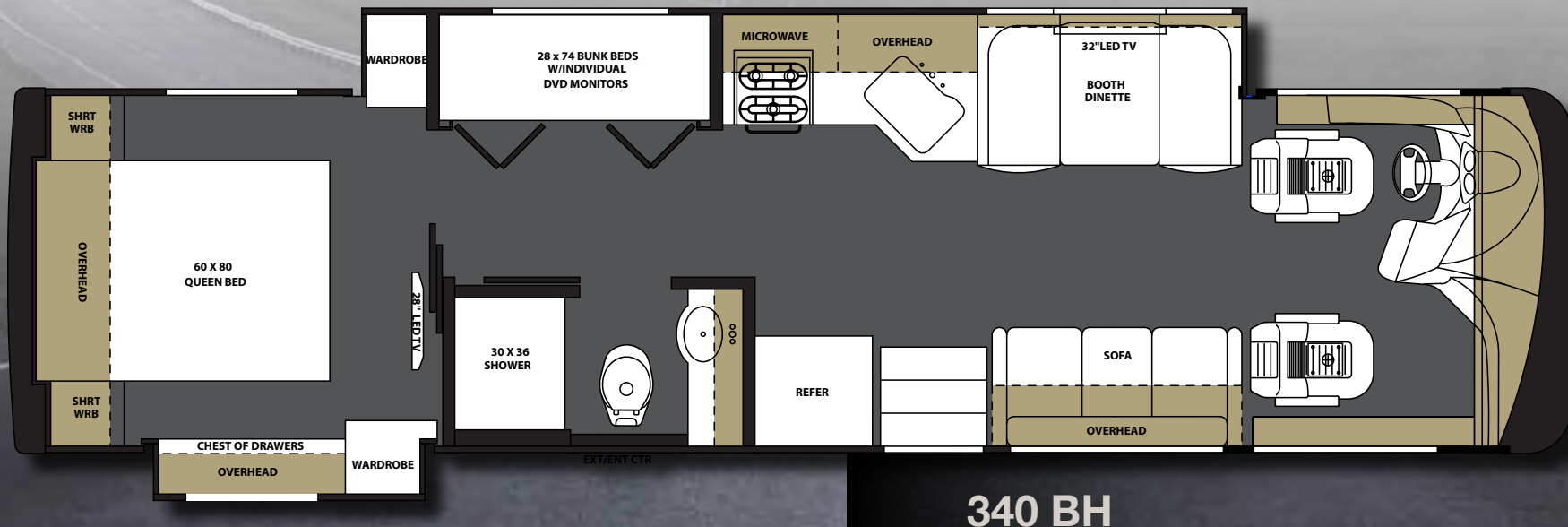
**Legacy** SR 340

# Floorplans and Specifications

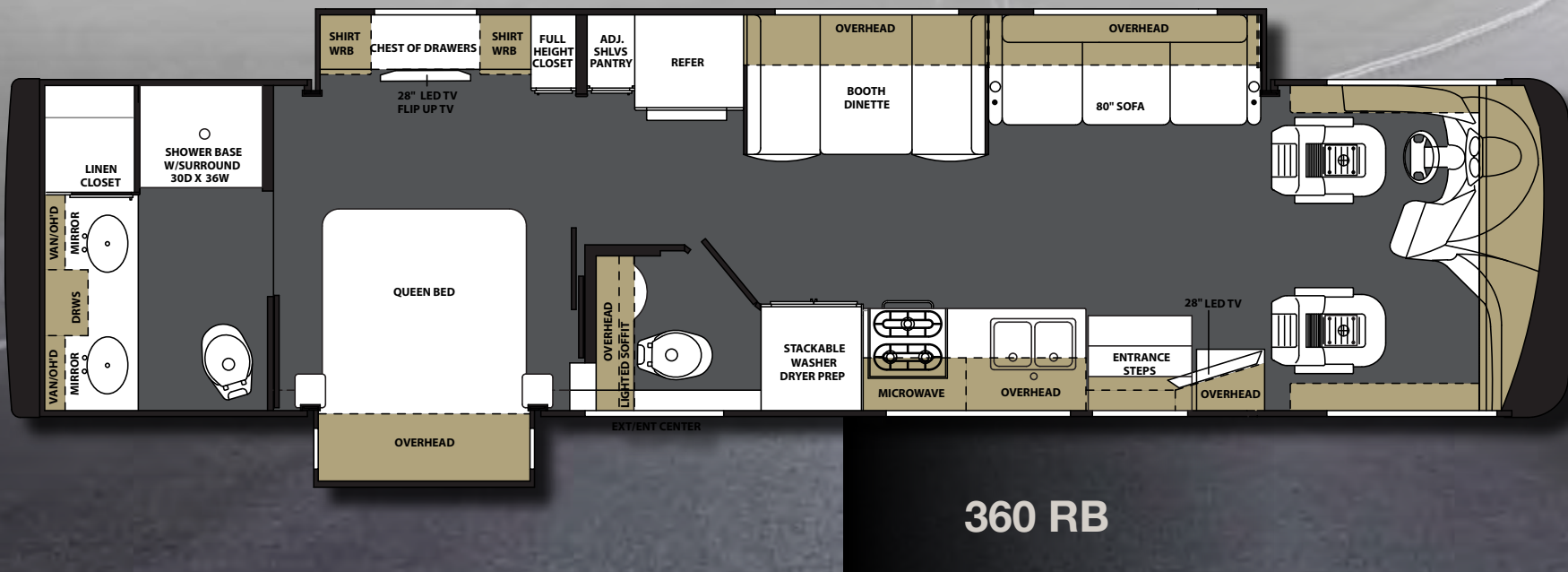
LEGACY SPECIFICATIONS	340BH	340KP	360RB
BLACK TANK (GAL)	44	44	44
FRESH WATER TANK (GAL)	84	84	84
GREY TANK (GAL)	44	44	44
LP TANK (GAL)	24.5	24.5	24.5
WHEEL BASE	208"	208"	242"
OVERALL WIDTH	100"	100"	100"
FURNACE OUTPUT (BTU)	35,000	35,000	42,000
*APPROX OVERALL LENGTH W/OUT LADDER (LADDER ADD 6")	36' 0"	36' 0"	"38' 10"
*APPROX OVERALL HEIGHT	12' 2 1/2"	12' 2 1/2"	12' 2 1/2"
*APPROX OVERALL COMPARTMENT STORAGE (CU. FT.)	101.5	101.5	122
GIRARD CONTINUOUS HOT WATER	S	S	S

340HP WITH ALLISON 2500 6-SPEED TRANSMISSION	340BH	340KP	360RB
GVWR	28,000	28,000	28,000
GCWR	33,000	33,000	33,000
GAWR (FRONT AXLE)	10,500	10,500	10,500
GAWR (REAR AXLE)	17,500	17,500	17,500

## Legacy SR 340



340 BH



# Legacy SR 340



## PRE-DELIVERY INSPECTION FACILITY

20,000 square feet of quality assurance. The bare essentials for a premium product. This state-of-the-art facility gives immediate daily feedback to production for quality assurance in every unit built.



Forest River, Inc. encourages our customers to purchase their Forest River products from a local dealership whenever possible for the following reasons:

- 1) Forest River, Inc. dealers are independently owned and operated businesses so priority service and scheduling is at their discretion and is often provided to customers that purchased their unit at that dealership.
- 2) Purchasing locally allows customers to establish meaningful relationships with a dealer, enhancing the RV experience through assistance with product questions, user tips or RV regulations for your state or country, and much more!
- 3) Canadian customers must meet requirements to bring an RV purchased out of the country to their home. These requirements may involve additional inspections and certifications, taxes and fees. Your local Canadian Dealer is a professional at meeting these requirements.
- 4) Scheduling timely warranty repairs and adjustments through a local dealership provides far greater flexibility and convenience to you, the customer!

It is the goal of Forest River, Inc. that all of our RV owners fully enjoy the RV experience and that customer satisfaction meets or exceeds their expectations!

## YOUR LEGACY DEALER



**Learn More**  
Scan this barcode using a QR Reader on your smart phone to learn more about Forest River.



A Berkshire Hathaway company.

Forest River, Inc. - Diesel Motorized Division  
1800 West Hively Avenue, Elkhart, IN 46515  
(574) 522-3693 [www.forestriverinc.com/berkshire](http://www.forestriverinc.com/berkshire)

All specifications contained herein are based on the latest product information at time of printing. Forest River reserves the right to make changes in colors, materials, equipment and specifications at any time without notice and assumes no responsibility for any errors in this brochure. The pictures in this brochure may show props and optional equipment. PLDD918

© 2015 - Legacy - a division of Forest River Inc.  
A Berkshire Hathaway company