

FREELANDER



Coachmen
Leader to the Great Outdoors.

FREELANDER CLASS C MOTORHOMES





LED lighting throughout • 1-piece Thermofoil kitchen countertop • Deep single bowl and double bowl sinks
High quality furniture and fabrics • Congoleum® Designer Carefree flooring

26RS shown with Espresso décor



A 26RS shown



B 26RS shown



C 26RS shown



D 26RS shown

The Coachmen Freelanders offers you all the "Good Stuff" novice RV'ers quickly appreciate and experienced RV'ers demand. The Freelanders mantra is to provide more factory installed features than anyone else, unparalleled value and reliable design and quality at an affordable price. The Freelanders will win you over with its right balance of beauty, function, and value in a quality product that you've come to expect in a Coachmen Class C product. For over 50 years, Coachmen has been providing generations a product they can rely on. You'll take pride in ownership of one of the top selling brands in the nation.



- A** Large 57" x 95" overhead bunk with child safety net and bunk ladder • LCD TV and DVD player • Back-up monitor
- B** Seating areas convert into sleeping areas • Large windows • Sturdy pedestal table • Ample seating with safety belts • Thermofoil dinette tops • Single child safety tether at forward facing dinette
- C** Privacy glass shower door • Composite bowl sink • Vanity mirror
- D** 60" x 80" residential queen bed with upgraded mattress option • Large wardrobe and/or shirt closets • Pleated night shades • TV prep • Even Cool ceiling ducted A/C (most models)



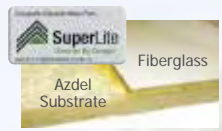
Residential microwave • 3-burner gas range top with power range hood • 16" oven • Even Cool ducted A/C system (NA 21QB)
Large double door refrigerator • Systems control panel

21RS shown with Coffee Bean décor



Coachmen's Even Cool™ air conditioning system is ducted through the crowned, vacuum-bonded roof. The system uses AMOCO insulated ductwork with radiused corners to provide maximum cooling efficiency. (most models)

TPO roof membrane – lightweight, durable and easy to maintain.



Azdel SuperLite™ sidewall substrate – lightweight, durable and moisture resistant.

2" thick aluminum cage constructed, color-infused, hi-gloss fiberglass sidewalls. (standard)



Slide room awnings (where applicable) to protect your slide room from debris.



Warehouse exterior storage – more than 100 cu. ft. available. (most models)

Exterior camp table w/table, sink and refrigerator. (optional on 21RS, 26RS)



Frelander 50 Gallons	Fresh Water System
	Other Brands 41 Gallons

50 gallons of fresh water – on average 20% more than the competition.



Integrated entry step with 80" entry door and auxiliary battery box.



Standard ONAN 4.0kw gas generator gives you 110v power when shoreline power is not available.



Exterior Entertainment Center w/LCD TV/Stereo/DVD and Speakers. (optional)

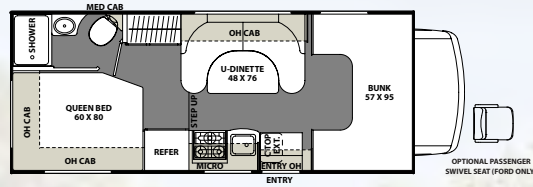


Frelander's one-touch power awning features adjustable arms for ease of use. (Lead Dog Package)

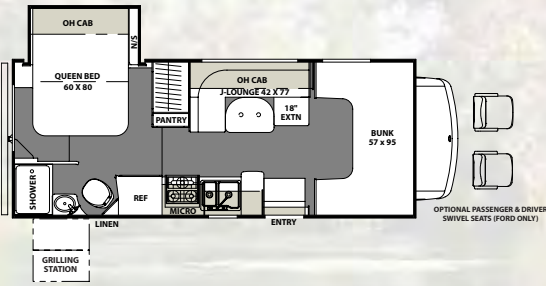


Dash stereo with touch screen control and integrated back-up monitor. (Lead Dog Package)

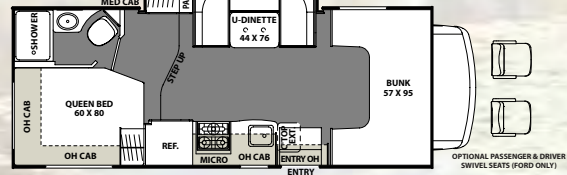
21QB



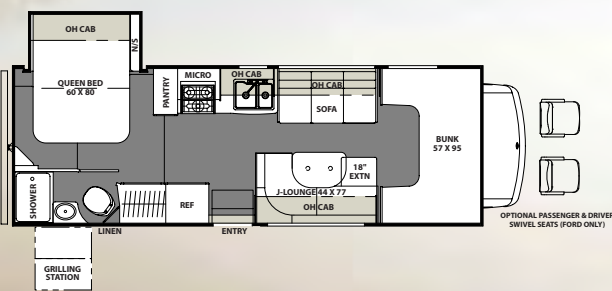
21RS



22QB



26RS



27QB



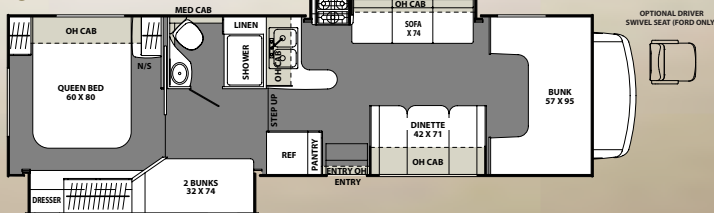
SPECIFICATIONS

MODEL	21QB	21RS	22QB	26RS	27QB	29KS	32BH
CHASSIS	4500-CHEVY / 350-FORD	4500-CHEVY / 350-FORD	4500-CHEVY / 350-FORD	4500-CHEVY / 350-FORD	4500-CHEVY / 350-FORD	4500-CHEVY / 450-FORD	4500-CHEVY / 450-FORD
ENGINE	V8-6.0L / V10-6.8L	V8-6.0L / V10-6.8L	V8-6.0L / V10-6.8L	V8-6.0L / V10-6.8L	V8-6.0L / V10-6.8L	V8-6.0L / V10-6.8L	V8-6.0L / V10-6.8L
HORSE POWER	324 / 305	324 / 305	324 / 305	324 / 305	324 / 305	324 / 305	324 / 305
TORQUE	373 / 420	373 / 420	373 / 420	373 / 420	373 / 420	373 / 420	373 / 420
WHEEL BASE	159" / 158"	159" / 158"	169" / 168"	191"/194"	191"/190"	209" / 208"	224" / 223"
GVWR* (LBS.)	14,200 / 12,500	14,200 / 12,500	14,200 / 12,500	14,200/12,500	14,200 / 12,500	14,200 / 14,500	14,200 / 14,500
GCWR* (LBS.)	20,000 / 18,500	20,000 / 18,500	20,000 / 18,500	20,000 / 18,500	20,000 / 18,500	20,000 / 22,000	20,000 / 22,000
CW* (APPROX. LBS.)	9,400 / 9,350	10,046 / 10,160	10,000 / 10,050	TBD	10,150 / 10,275	11,300 / 11,100	12,250 / 12,180
CCC (APPROX. LBS.)	4,842 / 4,190	4,030 / 2,340	4,254 / 2,500	TBD	3,540 / 2,160	1,983 / 3,421	2,200 / 2,184
GAWR FRONT (LBS.)	4,600 / 4,600	4,600 / 4,600	4,600 / 4,600	4,600 / 4,600	4,600 / 4,600	4,600 / 5,000	4,600 / 5,000
GAWR REAR (LBS.)	9,600 / 8,500	9,600 / 8,500	9,600 / 8,500	9,600 / 8,500	9,600 / 8,500	9,600 / 9,600	9,600 / 9,600
INTERIOR HEIGHT	6' 10 1/2"	6' 10 1/2"	6' 10 1/2"	6' 10 1/2"	6' 10 1/2"	6' 10 1/2"	6' 10 1/2"
EXTERIOR WIDTH	8' 5"	8' 5"	8' 5"	8' 5"	8' 5"	8' 5"	8' 5"
EXTERIOR HEIGHT (W/ A/C)	11' 1"	11' 1"	11' 1"	11' 1"	11' 1"	11' 1"	11' 1"
EXTERIOR LENGTH (W/ HITCH)	24' 5" / 23' 11"	24' 9" / 24' 3"	25' 4" / 24' 10"	27' 11" / 27' 5"	30' 0" / 29' 6"	31' 7" / 31' 1"	33' 5" / 32' 11"
HITCH WEIGHT (LBS.)	5,000	5,000	5,000	5,000	5,000	5,000 / 7,500	5,000 / 7,500
FUEL CAPACITY (GAL.)	57 / 55	57 / 55	57 / 55	57 / 55	57 / 55	57 / 55	57 / 55
LP CAPACITY (LBS.)	68	68	68	68	40	68	68
FRESH WATER CAPACITY (GAL.)	50	50	50	50	40	50	50
WATER HEATER CAPACITY (GAL.)	6	6	6	6	6	6	6
GREY TANK CAPACITY (GAL.)	25	28	28	31	31	32	34
BLACK TANK CAPACITY (GAL.)	22	31	22	31	31	28	29
EXTERIOR STORAGE (CU. FT.)	92	67	92	60	77	107	76
AWNING LENGTH (FT.)	15'	15'	16'	18'	20'	19'	11'

29KS



32BH



STANDARD

WARRANTY

- Motorhome – 12 Month/ 12,000 mile limited warranty
- Ford Chassis – 36 month/ 36,000 mile bumper-to-bumper warranty
- Ford Powertrain – 60 month/ 60,000 mile warranty
- Chevy Chassis – 36 month/ 36,000 mile bumper-to-bumper warranty
- Chevy Powertrain – 60 month/ 100,000 mile warranty
- Travel Easy Roadside Assistance

AUTOMOTIVE/EXTERIOR/CONSTRUCTION

- 55-Gallon Fuel Tank (Ford)
- 57-Gallon Fuel Tank (Chevy)
- Driver & Passenger Air Bags
- Deluxe Chassis Package
- Cruise Control
- Tilt Steering Wheel
- Dash Air Conditioning
- Power Windows & Locks
- Exterior Upgraded Mirrors
- 5,000/7,500 lb. Towing Hitch w/7 Way Plug
- Laminated Steel 2" Floor
- Laminated Aluminum 2" Sidewalls
- Crowned Laminated TPO Roof
- Steel Entry Step Box
- Ivory Exterior Moldings
- Ivory Thumb Lock Trunk Doors
- Ivory 80" Radius Entrance Door w/Window & Deadbolt
- Lamilux 4000 Sidewalls
- Ivory Gelcoat Running Boards
- New Freelander Graphics Package
- Roto Mold Rear Trunk Box/Plasti-Cote Metal Side Boxes
- Rear Steel Tube Bumper
- Stainless Steel Wheel Liners
- Exterior Safety Grab Handle
- Black Arm Slide Out Awnings
- Black Arm Power Awning w/Vinyl Weather Guard
- Aluminum Body Side Moldings
- Smooth Exterior Range Vent
- Black Rear Ladder
- Exterior LED Lights
- Aluminum Bunk Floor
- All Aluminum Walls

INTERIOR APPOINTMENTS

- Platinum Wood Grain
- Thermofoil Countertops
- Black Hardware
- Rolled Flooring
- Hardboard Ceiling Panels
- Roller Bearing Drawer Guides
- Poplar Drawer Sides (behind doors are Techwood)
- Night Shades and Lambrequins
- Tinted Safety Glass Radius Slider Windows
- ODS Cab Over Side Window
- Factory Reclining Pilot & Passenger Seats
- Booth Dinette (27QB, 29KS, 32BH)
- J Dinette w/Pullout (21RS, 26RS)
- U Dinette (22QB)
- U Dinette (21QB)
- Single Child Tether at Forward Facing Dinette (NA 21QB)
- Jackknife Sofa (NA 21QB, 22QB)
- Glass Insert Doors in Select Areas
- House Type Bath Door
- Black Recept/Rotaires/Switches
- Interior Safety Grab Handle at Entrance Door
- Vinyl Padded Cab Over Mattress Restraints
- Vinyl Padded Headknocker
- Magazine Rack over Entry Door

INTERIOR EQUIPMENT

- Crank Up TV Antenna
- LP Leak Alarm
- Smoke Detector
- Carbon Monoxide Detector
- Fire Extinguisher
- Touch Screen Radio & Backup Camera
- Bedroom LCD TV Backer and Connections
- Pre-wired for Satellite Dish Thru Coax Input

GALLEY

- Residential Size Microwave Oven - Black
- Dometic Flush Mount, Double Door Refrigerator
- Systems Control Panel
- Stainless Steel Single Bowl Kitchen Sink (21QB, 22QB)
- Power, Lighted Range Hood - Black
- Black Atwood 3-Burner Cooktop with 16" Oven
- Satin Nickel Kitchen Faucet
- Black Sure Fit Dinette Table Posts
- Kitchen Flip Up Countertop Extension (21QB, 22QB, 29KS)

BATH AND WATER

- City Water Pressure Fill Ports
- Power Bath Vent
- Demand Water Pump
- Composite Parchment Lavatory Sink
- Parchment Lav Faucet w/Round Knobs
- Parchment Shower Faucet & Head
- Lav Mirror
- Satin Nickel Shower Door - Glass
- Black Towel Ring/TP Holder/Robe Hooks
- Parchment ABS Molded Shower & Surround
- Composite Foot Flush Toilet - Parchment
- 6-Gallon Gas Electric Ignition Water Heater
- Skylight Over Shower

SLEEPING

- Bunk Beds 32x74 (Fabric Covered) (32BH)
- Queen Bed 60x80 (Ticking)
- Standard Bedspread
- Cab Over Bunk 57x95 (Fabric Covered)
- Privacy Drape - Lower Cab
- Child Safety Ladder w/Bunk Velcro Restraints
- Padded Headboard

ELECTRICAL/HEATING/AC

- 30 amp Power Cord
- 55 amp Electronic Converter
- Auxiliary Battery
- Manual Generator Changeover
- 4.0 KW Onan Gas Generator
- GFI Circuit
- Black Manual Auxiliary Battery Disconnect
- Oval Patio Light
- Wall Mounted Thermostat
- 30,000 BTU Ducted Furnace (NA 21QB, 22QB)
- 20,000 BTU Ducted Furnace (21QB, 22QB)
- 13,500 BTU Non-Ducted Roof A/C (21QB)
- 13,500 BTU Ducted Roof A/C (NA 21QB)
- Recept. and Coax Connect by Awning Leg (if possible)
- LED Lights Throughout
- Exterior TV Ready Box
- Exterior Solar Panel Plug In Connection by Entry Door

OPTIONAL

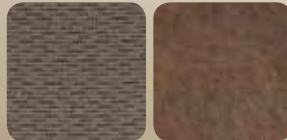
STAND ALONE OPTIONS

- 24" Coach TV & DVD
- (2) Bunk TVs w/Internal DVD Players (32BH)
- External 24" TV/Stereo/Game Port/Speakers
- Exterior "Camp Kitchen" Refer/Sink/Table (29KS)
- Exterior "Camp Kitchen" Table (21RS, 26RS)
- Upgrade Serta Mattress (21RS is Williamsburg)
- Driver Swivel Seat (Ford or Chevy) (NA 21QB, 27QB)
- Passenger Swivel Seat (Ford or Chevy) (NA 29KS, 32BH)
- Exterior Windshield Cover
- Cockpit Folding Table (for Ford rotating seats)
- 15,000 BTU Low Pro A/C w/Heat Pump (NA 21QB)
- "Camping Cozy" Package (Dual Pane Tinted Windows, Tank Pads & At-Tank Gate Valves) (NA 32BH Chevy)
- Spare Tire
- Air Assist Suspension (Mandatory 32BH) (NA 21QB)
- Z240 RV Compliance (Ford only)
- Canadian Compliance (Speedometer/Lights) (Ford Only)
- Child Safety Net
- Heated Tanks

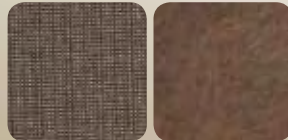
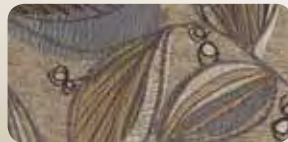
FREELANDER LEAD DOG PACKAGE (included with every model)

- Color-infused High Gloss Exterior Fiberglass Sidewalls
- Color-infused Fiberglass Running Boards & Fender Skirts
- Tinted Radius Slider Windows – Safety Glass
- 3-burner Range w/16" Oven
- Stainless Steel Wheel Inserts
- AM/FM CD Player w/Dash Speakers
- Touch Screen Radio w/Back Up Camera & Monitor
- Power Patio Awning w/Vinyl Weather Guard
- LED Lighting
- Rear Ladder
- Travel Easy Roadside Assistance
- 50-gallon Fresh Water Tank
- Slide Out Awnings (as applicable)
- 5,000 or 7,500 lb. Towing Hitch w/7 Way Plug
- Privacy Glass Shower Door
- 4.0 KW Onan Gas Generator
- Queen Bed – 60x80 (fabric covered)
- Roller Bearing Drawer Glides
- Azdel Superlite Composite Substrate in Sidewall
- Sealed/Seamless Thermofoil Countertops
- Child Safety Net at Cabover
- Heated Holding Tanks

DÉCOR



COFFEE BEAN



HAZELNUT



ESPRESSO



PLATINUM

Standards and Options subject to change without notice.



EXPERIENCE ALASKA — visit coachmenrv.com to see a Frelander customer's Alaskan experience.
Photo courtesy of a Valued 2014 Frelander Owner, Anchorage, Alaska



**Travel Easy™
Roadside Assistance**

RVing is easier with Coachmen's Travel Easy™ Roadside Assistance provided FREE the first year of ownership to those who purchase a New Coachmen RV. Administered by Coach-Net, this service provides you with 24/7 operational, technical and emergency road service coverage. Also included is towing, fuel delivery, jump starts, lockout service, tire changes, mobile mechanic and unlimited technical assistance. Anywhere. Anytime. Travel Easy™ is the security of knowing that help is an easy phone call away.



Coachmen RV Owner Digital Kit App

Now you can have your Owners Manual with you wherever you are. Download our free App from iTunes and you'll have the information at your fingertips.



**Free One Year Membership –
Coachmen Owners' Association**

Coachmen is proud to sponsor the largest manufacturer sponsored camping club in North America ... Coachmen Owners' Association (COA). COA provides a broad breadth of value propositions for our owners including: planned trips/ tours and rallies at bulk rate discounts, free trip routing, free campground directory, free Easy RVing magazine, theme park discounts, fuel discounts, mail forwarding, a dedicated COA web site, local and state club activities and Caravan Chapter membership opportunities. Most importantly, COA enhances the Coachmen ownership and RV lifestyle experience.

Every new Coachmen RV buyer is eligible for a 1 Year FREE membership in the Coachmen Owners' Association. It all adds up to an easy ownership experience!



Forest River, Inc. encourages our customers to purchase their Forest River products from a local dealership whenever possible for the following reasons:

- 1) Forest River, Inc. dealers are independently owned and operated businesses so priority service and scheduling is at their discretion and is often provided to customers that purchased their unit at that dealership.
- 2) Purchasing locally allows customers to establish meaningful relationships with a dealer, enhancing the RV experience through assistance with product questions, user tips or RV regulations for your state or country, and much more!
- 3) Canadian customers must meet requirements to bring an RV purchased out of the country to their home. These requirements may involve additional inspections and certifications, taxes and fees. Your local Canadian Dealer is a professional at meeting these requirements.
- 4) Scheduling timely warranty repairs and adjustments through a local dealership provides far greater flexibility and convenience to you, the customer!

It is the goal of Forest River, Inc. that all of our RV owners fully enjoy the RV experience and that customer satisfaction meets or exceeds their expectations!

GVWR (Gross Vehicle Weight Rating): The maximum permissible weight of the unit, including the unloaded vehicle weight (UVW) plus all fluids, cargo, optional equipment and accessories. For safety and product performance, do not exceed the GVWR.

GCWR (Gross Combined Weight Rating): The maximum total weight of the loaded unit, plus a tow vehicle. This includes the weight of both the unit and tow vehicle, fuel for each, all other fluids, cargo, occupants, optional equipment and accessories.

Important Note: All capacities are approximate, and all dimensions are nominal. Coachmen motorhomes are designed to allow for a wide variety of uses, extended trips with two people or short trips with multiple people. Accordingly, each unit allows ample room for sleeping, seating, fluids and cargo. While the customer is the beneficiary of this design, the customer also bears the responsibility to select the proper combination of passengers, cargo, load, and tow vehicle without exceeding the chassis weight capabilities. Consumer may need additional braking capacity to tow loads greater than 1,000 pounds.

Seat belts should always be worn for passenger safety. Seat belts are provided at most locations to allow convenience in selecting which seat to occupy. However, it is not intended that all seating positions equipped with a seat belt may be occupied while the vehicle is in motion, without regard to other weight factors.

All Coachmen motorhomes are designed to ensure that the number of passengers allowed while the vehicle is in motion will always at least equal the stated sleeping capacity. Though extra seat belts may be provided, for your safety and the proper operation of your vehicle, limit your passengers to the number allowed by the Net Carrying Capacity of your vehicle.

Your **FREELANDER** Dealer



**423 N. Main Street • P.O. Box 30
Middlebury, IN 46540**

To learn more about Coachmen RV and our products and see how Coachmen is making the easy life easier, call us toll free at **(800) 353-7383**, or visit www.coachmenrv.com



Learn More
Scan this barcode using a QR Reader on your smart phone to learn more about Forest River.



A Berkshire Hathaway company.

All information contained in this brochure is believed to be accurate at the time of publication. However, during the model year, it may be necessary to make revisions and Coachmen reserves the right to make all such changes without notice, including prices, colors, materials, equipment and specifications as well as the addition of new models and the discontinuance of models shown in this brochure. Therefore, please consult with your Coachmen dealer and confirm the existence of any materials, design or specifications that are material to your purchase decision. 2/15